

# **WARREN YAZOO**

## **BEHAVIORAL HEALTH**

2019  
ANNUAL REPORT



**COMMUNITY-FOCUSED COMPASSIONATE CARE SINCE 1975**

# Executive Director's Message



Warren Yazoo Behavioral Health continues to make great strides in our work to create lasting, positive change for individuals and families. We do this by offering comprehensive and integrated behavioral health services. This annual report is one way for us to tell our story of the ways we seek to reach and serve the citizens of Warren and Yazoo counties.

Change and flexibility have become the new norm for daily operations within our service system. Across this year, we have also begun to experience coverage denials and reductions via managed care organizations, resulting in a direct impact on agency operations and consumer services. However, with the challenges also came the opportunity for us to face seemingly insurmountable obstacles and develop creative and sustainable solutions.

Warren Yazoo Behavioral Health continues to nurture strong community partnerships to help ensure that the most vulnerable citizens continue to receive the compassionate care and valuable services they need to live their best and most productive lives. We strive to be the preferred place of employment and the provider of the highest quality comprehensive behavioral health services available to our communities.

While we close out this year with many accomplished goals, we move into the next year with changes and challenges remaining an ever-present expectation for our daily operations. The Warren Yazoo family remains poised to navigate the unpredictable path ahead with character and integrity. We have our sight set on another successful year ahead.

  
Robert B. Barton, Jr.

## Table of Contents

Executive Director's Message	2
Executive Leadership	3
Crisis Services	4
Addiction Services	5
Children & Youth Services	6
Community Outreach	7
Service Numbers	8
Economic Impact Report	9
Administration Report	10
Service Locations	11
Service Partners	12

## Mission Statement

Warren Yazoo Behavioral Health, a non-profit 501(c)(3) agency, is one of fourteen (14) regional community mental health centers certified by the Mississippi Department of Mental Health to provide comprehensive behavioral health services. Our mission is to provide the highest quality and most cost-effective behavioral health services to individuals who need our services.



# LEADERSHIP

## SENIOR MANAGEMENT



Robert B. Barton, Jr.  
Executive Director  
37 Years of Service



Donald G. Brown  
Deputy Executive Director  
36 Years of Service



Richard D. Vessell  
Chief Financial Officer  
25 Years of Service

## BOARD OF DIRECTORS



Nelson Tate, Chair  
\*Yazoo County  
MH/IDD Commissioner



Ruth Nixon, Vice-Chair  
\*Warren County  
MH/IDD Commissioner

In Memoriam

**Charles Roy Ward**  
Board Member



March 3, 1934—November 23, 2019



Col. Benny Terrell (Ret)



Gala Starling



A.J. Buddy Dees



Rosemary Knox

\*The Board of Supervisors in each county appoint MH/IDD Commissioners.

# SERVICE HIGHLIGHTS

## HOUSING SERVICES



The agency operates two group homes designed to provide community-based care for the seriously mentally ill. Together, the two homes can accommodate a total of 27 residents. Residents receive affordable 24-hour residential care and supervision in a home-like setting.

The Transitional Living Apartment program is provided in Warren and Yazoo Counties. This program provides furnished apartments for adults with a serious mentally ill diagnosis who are in need of transitional living arrangements to help them obtain the goal of independent living.

**Wisconsin Cove** is an apartment complex of 17 one-bedroom units in Vicksburg. The property is in close proximity to healthcare facilities, retail businesses, government offices, and faith-based organizations. The development helps to meet Warren County's affordable housing need for individuals who meet eligibility criteria.



**Cornerstone Apartments** in Yazoo County is a complex of three apartment buildings offering 12 Intellectually/ Developmentally Disabled individuals supervised housing and supported services. This safe and affordable housing fosters an individual's ability to be as self-sufficient and independent as possible.



# SERVICE HIGHLIGHTS



## SUBSTANCE USE DISORDER SERVICES

**The Chemical Dependency Center**, located in Vicksburg, MS is a 25 bed facility for adults interested in beginning the recovery process from substance use. The residential treatment program offers individual and group counseling, recovery skills education, social support activities, a continuing recovery support services. The program offers a structured treatment that is often needed to begin a successful recovery.



Widespread increases in **opioid addiction** have led to greater access to treatment services. Without effective detoxification protocols, individuals lacking resources will inevitably continue or return to illicit opiate use and, consequently, the myriad of associated psychosocial and health problems. The treatment process provides access to clinically appropriate evidence-based practices for Opioid Use Disorder treatment, particularly, the use of medication assisted treatment, i.e., the use of FDA-approved medications in combination with psychosocial interventions. The provision of peer and other recovery support services are also designed to improve treatment access and retention and support long-term recovery.



**Warner Buxton**  
**CDC Director**



# SERVICE HIGHLIGHTS



## CHILDREN AND YOUTH SERVICES

**School Day Treatment services** are a beneficial programming option for children and adolescents who are in need of highly structured care as they work to overcome symptoms of behavioral and/or mental health concerns. These day treatment programs offer youth the ability to participate in comprehensive therapeutic interventions, while also adhering to their academic responsibilities.



**Suzanne Lancaster**  
serves as the Regional  
Children's Services  
Coordinator.

**Alisha Creel** serves as  
the Children's Day  
Treatment Coordinator  
for Warren County.



**1410**

**Children &  
Youth Served**

**283**

**students served in  
school-based programs.**

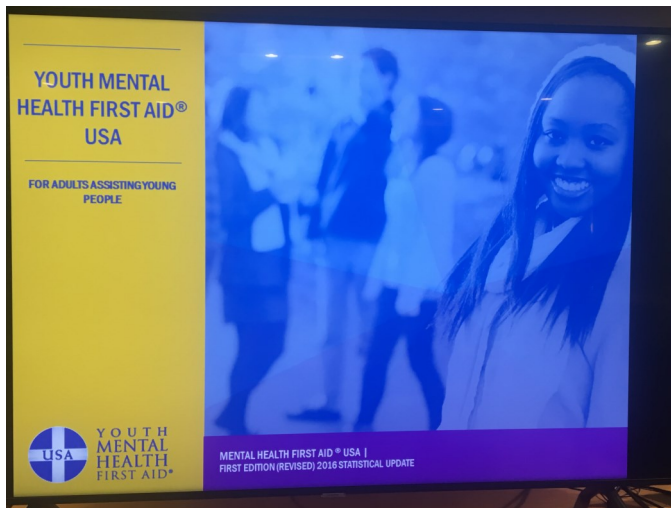
**OUTPATIENT SERVICES. Individual and Family Therapy** provides face-to-face conversations with a Master's level therapist and the child and his/her family during which time relative issues are addressed. These issues may include assessment, evaluation, multi-treatment planning, family background history, education/vocational achievements, presenting problems, and medical history. The goal is to improve the individuals overall level of adaptive functioning within the family and society. **Community Support Services** assures continuing care for children at-risk of escalating problems and assists family members and school personnel in understanding approaches to help students who have problems coping.

# SERVICE HIGHLIGHTS



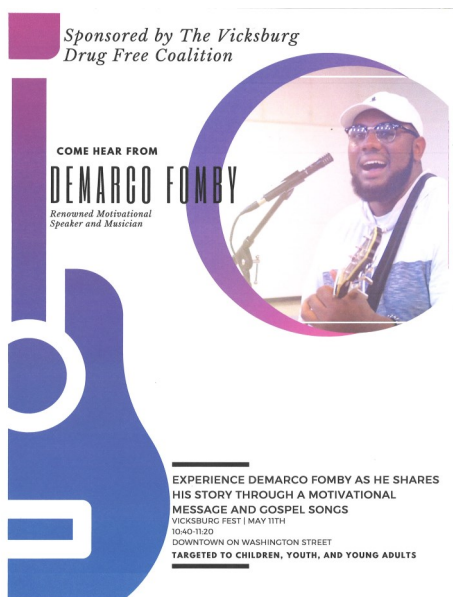
## COMMUNITY OUTREACH

**Mental Health First Aid** is a groundbreaking public education program that helps individuals identify, understand, and respond to signs of mental illnesses and substance use disorders. Three staff members of Warren Yazoo Behavioral Health are certified to teach Mental Health First Aid classes which includes a 5-step action plan, evidence-supported treatment, and knowledge to help an individual in a crisis connect with an appropriate professional, peer, and social/self-help care. Typical classes include educators, HR professionals, clergy, primary care professionals, police and first responders, social workers, and parents.



Identify.  
Understand.  
Respond.

## LOCAL EVENTS WITH COMMUNITY PARTNERS



# OUR SERVICES

caring for our community

2138

Adults

**Adults with Serious Mental Illness: Unduplicated count of adults with SMI who received services**

1654

Adults served

**Adult Psychiatric Services:** A psychiatric consultation is a comprehensive evaluation of the psychological, biological, medical, and social concerns. Medication evaluation along with other therapeutic services may be recommended.

1221

All consumers

**Initial Psychiatric Assessment:** Individuals receiving services have access to a psychiatrist or psychiatric nurse practitioner for assessment and recommendations for addressing areas of concern.

1410

Children  
Served

**Children & Youth Services: Individuals under the age of 18 with a Serious Emotional Disturbance who received services.**

1138

Clients Served

**Community Support Services:** CSS Specialists assist individuals in gaining access to needed services and provides supportive counseling/reality orientation, skills training, help in enlisting social supports, and monitors physical and mental health status.

283

Children  
Served

**Day Treatment Services:** Day Treatment is a structured behavioral management program for children and youth provided in a classroom setting. Day treatment focuses on appropriate social interactions and problems solving skills.

45

Elderly Served

**Senior Psychosocial Services** A model program for providing a day treatment socialization program to elderly individuals experiencing depression and other behavioral health issues due to isolation, declining health, or a diminished support system.

108

Adults Served

**Psychosocial Rehabilitation Services** A program that offers curriculum-based interventions for recovery skills development and support for community functioning and individual well-being.

222

Clients Served

**Chemical Dependency Residential Services:** The 30-day residential program treatment facility, located in Vicksburg, Mississippi, is a 25-bed facility for both males and females experiencing a substance use disorder.

39

Adults Served

**Housing:** Apartments, group homes, and transitional living apartments offer residents affordable, safe housing which fosters their ability to be as self-sufficient and independent as possible.

COMMUNITY-FOCUSED, COMPASSIONATE CARE SINCE 1975



# 2019 Economic Impact Report

Warren Yazoo Behavioral Health, a non-profit 501(c)(3) agency, is one of fourteen regional community mental health centers certified by the Mississippi Department of Mental Health to provide comprehensive behavioral health services. The CMHC strives to provide the highest quality and most cost-effective behavioral health services to individuals and families in need of services.



**WARREN YAZOO BEHAVIORAL HEALTH**

COMMUNITY-FOCUSED, COMPASSIONATE CARE SINCE 1975

**\$10.9 MILLION**

the estimated financial impact on the catchment area

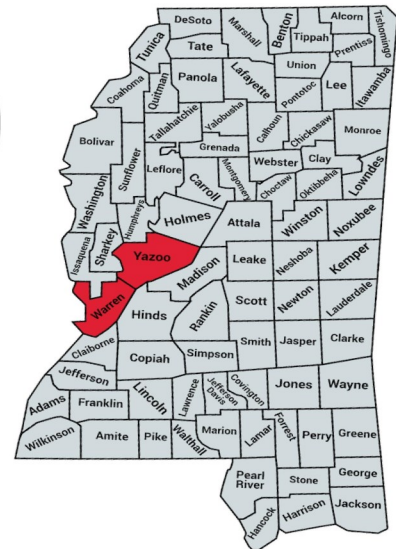
**4,401**

the number of children, youth, and adults who received services and supports last fiscal year

**\$ 1,314,288**

the amount of indigent services provided to children, youth and adults who could not afford services

Region 15 serves the communities of Warren and Yazoo counties in Mississippi.



**33**

COMMUNITY LIVING BEDS

**847**

CRISIS TEAM SUPPORT PROVIDED

**25**

ALCOHOL & DRUG TREATMENT BEDS

## Services Provided:

- Outpatient Therapy
- Physician/Psychiatric Services
- Pre-Evaluation Screening for Civil Commitment
- Community Support Services
- Emergency/Crisis Services
- Crisis Enhancement Services
- Peer Support Services
- Consultation and Education
- Psychosocial Rehabilitation
- Senior Psychosocial Rehabilitation
- School Day Treatment
- MAP Team
- Supervised Living
- Supported Living
- Targeted Case Management
- Homelessness Transition Assistance
- Day Habilitation Services
- Primary Residential A&D Services
- Transitional Residential Services
- Recovery Support Services
- DUI Assessment
- HIV Risk Assessment/Testing/Education
- Withdrawal Management
- Intensive Outpatient Services
- Drug Prevention Services

## CONTACT US:

Warren Yazoo Behavioral Health  
3444 Wisconsin Avenue, Vicksburg, Mississippi 39180  
Phone: (601) 638-0031

Mobile Crisis Response: (888) 558-2077



Warren Yazoo Behavioral Health employs 200 individuals and has created 98 indirect jobs in the catchment area.

# ADMINISTRATION



## FISCAL RESPONSIBILITY

### REVENUES \*

### EXPENDITURES \*

SOURCES	DOLLARS	PERCENT	CATEGORY	DOLLARS	PERCENT
School Contracts, United Way	\$158,096	1.5%	Personnel	\$7,555,102	72%
Patient Payments, Insurance	\$274,279	3%	Contractual	\$1,805,010	17%
County Tax Funds	\$167,680	1.6%	Commodities	\$696,034	7%
State Funds	\$2,398,065	24%	Equipment	\$125,639	1%
Medicaid/Federal	\$7,199,798	71%	Medicaid Admin Fee	\$62,060	.5%
			Travel	\$255,810	2.5%
<b>TOTAL</b>	<b>10,171,458</b>		<b>TOTAL</b>	<b>\$10,499,655</b>	

\*The financial statements contained in these tables are based on unaudited financial statements for the year ended September 30, 2019

## HUMAN RESOURCES REPORT

### EMPLOYEE LONGEVITY

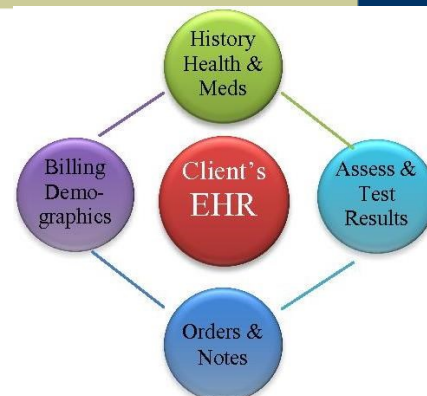
### STAFF BY DISCIPLINE

Range in Years	# of Employees
5– 10 Years	21
10-15 Years	28
15-20 Years	20
20-25 Years	21
25-30 Years	9
30+ Years	5

Disciplines of Agency Staff	Number
Psychiatrists, Psychologists, Nurse Practitioners	7
Therapists—M.S.W, M.A. or above	52
Nurses—Licensed & Registered	8
Mental Health Professionals— B.A.	46
Mental Health Workers—less than B.A.	20
All other staff (Administrative, support)	62
<b>Total</b>	<b>195</b>

## ELECTRONIC HEALTH RECORDS

Warren Yazoo Behavioral Health, in collaboration with other community mental health centers in the state, have contracted with Boston Technologies, Inc. to design, and install a Certified Electronic Health Record system. The client data system will be integrated with staff activity tracking, billing productivity analysis, authorization management, and scheduling. The data system will be used to monitor a client's needs, treatment and progress. It will also provide extensive demographic and productivity reporting.



**COMMUNITY-FOCUSED, COMPASSIONATE CARE SINCE 1975**



# SERVICE LOCATIONS



## WARREN COUNTY

### Administrative/Outpatient Office

3444 Wisconsin Avenue  
Vicksburg, MS 39180  
601.638.0031

### Chemical Dependency Center

3442 Wisconsin Avenue  
Vicksburg, MS 39180  
601.634.0181

### PACT –Program of Assertive Community Treatment

3448 Wisconsin Avenue  
Vicksburg, MS 39180  
601.638.0024

### Milestone Psychosocial Rehabilitation

3446 Wisconsin Avenue  
Vicksburg, MS 39180  
601.638.0100

### Villa Pacis Group Home

3440 Wisconsin Avenue  
Vicksburg, MS 39180  
601.636.1814

### Some Place Special

3527 Manor Drive, Suite C  
Vicksburg, MS 39180  
601.619.4400

## YAZOO COUNTY

### Outpatient Office

635 W. Willie Morris Parkway  
Yazoo City, MS  
662.746.5712

### Developmental Support Services

605 W. Willie Morris Parkway  
Yazoo City, MS  
662.746.7363

### Horizon Psychosocial Rehabilitation

625 W. Willie Morris Parkway  
Yazoo City, MS  
662.746.3200

### Cornerstone Apartments

601 W. Willie Morris Parkway  
Yazoo City, MS  
662.716.9803

### Children's Day Treatment

505 W. Willie Morris Parkway  
Yazoo City, MS  
662.746.4566

### Kings Daughters and Sons Group Home

1095 Calhoun Avenue  
Yazoo City, MS  
662.746.4361

Vicksburg 601.638.0031 | 24/7 Crisis **Helpline 1-888-558-2077** | Yazoo City 662-746-5712

**COMMUNITY-FOCUSED, COMPASSIONATE CARE SINCE 1975**

# PARTNERS IN SERVICE



BEHAVIORAL HEALTH FOUNDATION OF CENTRAL MS	WARREN COUNTY JUVENILE DETENTION CENTER
CITY OF VICKSBURG	WARREN COUNTY YOUTH COURT
CITY OF YAZOO CITY	HUDSPETH REGIONAL CENTER
INTERNATIONAL PAPER FOUNDATION	GATEWAY MAP TEAM COALITION
UNITED WAY OF WEST CENTRAL MS	YAZOO COUNTY YOUTH COURT
MERIT HEALTH RIVER REGION	NAMI STATE & LOCAL AFFILIATES
BAPTIST MEDICAL CENTER YAZOO	NROUTE TRANSIT COMMISSION
G A CARMICHAEL FAMILY HEALTH CLINIC	VICKSBURG WARREN E-911 COMMISSION
YAZOO CITY MEDICAL CLINIC	YAZOO COUNTY HEALTH NETWORK
YAZOO COUNTY REGIONAL CORRECTIONAL FACILITY	VICKSBURG HEALTH NETWORK
MS ACTION FOR PROGRESS	VICKSBURG POLICE DEPARTMENT
VICKSBURG FAMILY DEVELOPMENT SERVICE	WARREN COUNTY SHERIFFS DEPARTMENT
VICKSBURG WARREN CHAMBER OF COMMERCE	YAZOO CITY POLICE DEPARTMENT
YAZOO COUNTY CHAMBER OF COMMERCE	YAZOO COUNTY SHERIFFS DEPARTMENT
WARREN COUNTY BOARD OF SUPERVISORS	BOLIVAR COUNTY COUNCIL on AGING, Inc.
YAZOO COUNTY BOARD OF SUPERVISORS	MS DEPARTMENT OF MENTAL HEALTH
VICKSBURG WARREN SCHOOL DISTRICT	MS DEPARTMENT OF TRANSPORTATION
YAZOO COUNTY SCHOOL DISTRICT	MS DIVISION OF MEDICAID
YAZOO CITY SCHOOL DISTRICT	MS DEPARTMENT OF REHABILITATION SERVICES
WARREN COUNTY DRUG COURT	UNITED STATES PROBATION OFFICE
WARREN COUNTY HOLDING FACILITY	SUBSTANCE ABUSE MENTAL HEALTH SVCS ADMIN



**WARREN YAZOO BEHAVIORAL HEALTH**

**COMMUNITY-FOCUSED, COMPASSIONATE CARE SINCE 1975**

**WWW.WARREN-YAZOO.ORG**